

Kenton C. Ward, CFM
Surveyor of Hamilton County
Phone (317) 776-8495
Fax (317) 776-9628

Suite 188
One Hamilton County Square
Noblesville, Indiana 46060-2230

To: Hamilton County Drainage Board

January 10, 2020

Re: Williams Creek Drainage Area (#315): Springmill Road Improvement Project

Attached are plans and other information for the Springmill Road Improvement project. An inspection of the drainage facilities for this project has been made and the facilities were found to be complete and acceptable.

This report will serve as an initial and final report for this construction. This road project began just south of Main Street and ended at the 111th Street intersection. The work done is reflected on the final construction plans by United Consulting- Project Number 16-ENG-52. During this construction several regulated drains were affected. Those drains are as follows:

Plan Sheet 37

Williams Mill Drain- Section 1 Arm: the project removed 198 feet of 12" RCP and 127 feet of 6" SSD. This occurred at the Burlington Lane. It affected existing structures 733-734 and 731-732 and removed a total of 325 feet of drain.

Plan Sheet 44-45

Jackson's Grant Drain- Section 1B Arm: the project removed 68 feet of 12" RCP, 76 feet of 15" RCP and 102 feet of 6" SSD. This occurred at Jackson's Grant Blvd. It affected existing structures 629-630 and 631-632 and removed a total of 246 feet of drain.

Plan Sheet 45

Spring Lake Estates Drain – Sec. 2 Arm: the project removed 76 feet of 6" SSD. This occurred at Mallard Court.

Plan Sheet 46

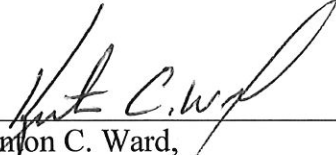
Spring Lake Estates Drain – Sec. 1 Arm: the project removed 42 feet of 6” SSD. This occurred at Pintail Court.

Plan Sheet 49-50

Springmill Streams Drain: Springmill Ridge Sec. 1 Arm: the project removed 50 feet of 12”CMP. This occurred just north of the South East corner of lot 8. Also, the project removed existing structure 611 and replace it with new structure 321. This occurred at the South East corner of lot 1. In summary, the project affected existing structures 615,616, 611 and removed a total of 50 feet of drain.

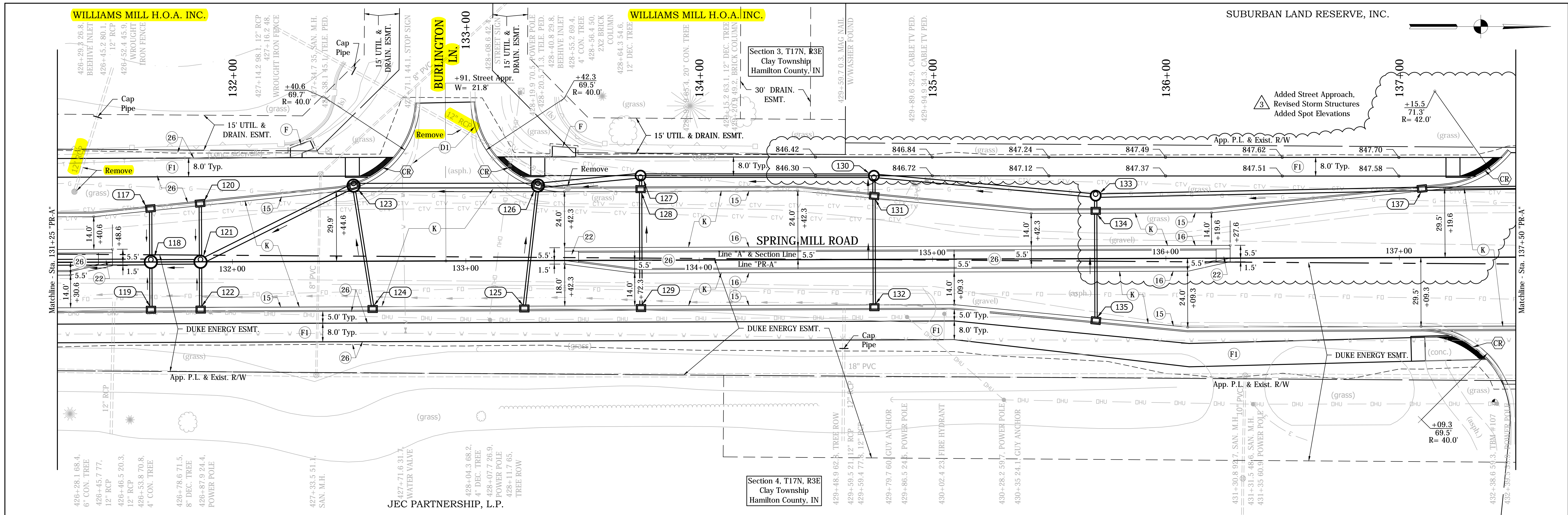
This project was paid for by the City of Carmel and work was conducted within existing drain easements and road right of way I recommend the Board approve the drain’s construction as complete and acceptable.

Sincerely,



Kenton C. Ward,
Hamilton County Surveyor

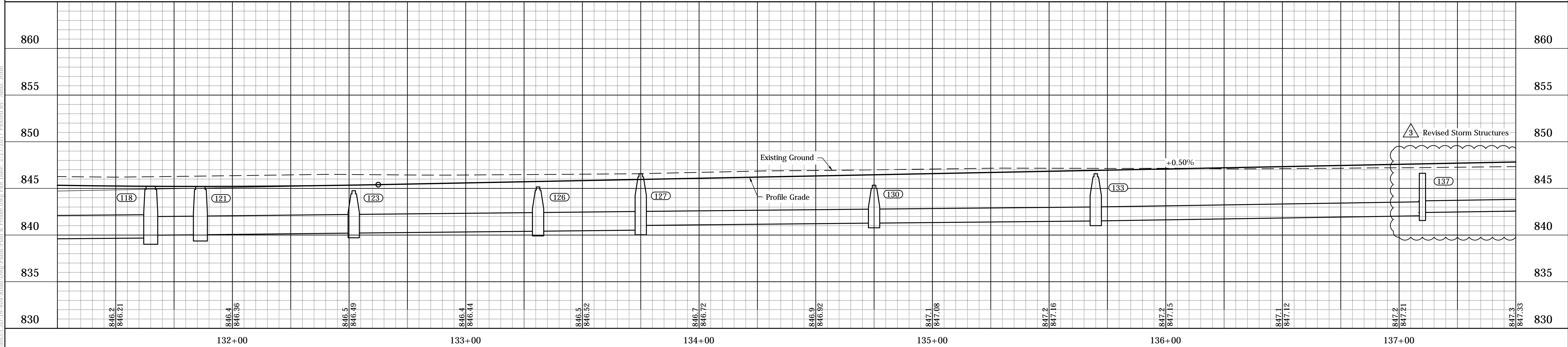
KCW/slm



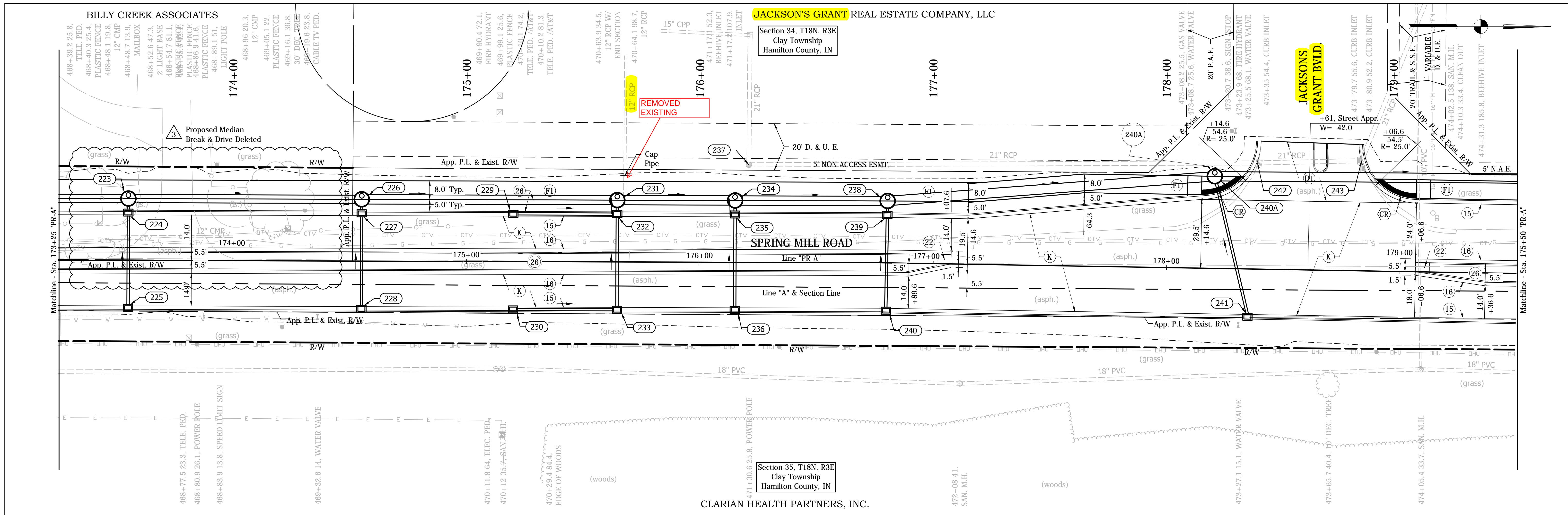
LEGEND

(C1) PCCP for Approaches, 6" on Subgrade Treatment, Type II	(D1) HMA for Approaches 165 #/Sys HMA Surface, Type "C", on 275 #/Sys HMA Intermediate, Type "C", on 1045 #/Sys HMA Base, Type "C", Placed w/ Minimum Of 3 Lifts, on Subgrade Treatment, Type IB	(F) Sidewalk, 4" on 4" Compacted Aggregate, No. 53, Base	(K) 165 #/Sys HMA Surface, Type "C" on 275 #/Sys HMA Intermediate, Type "C" on 385 #/Sys HMA Base, Type "C" on 250 #/Sys HMA Intermediate, OG, Type "C" on 330 #/Sys HMA Base, Type "C"	(K1) Truck Apron Decorative PCCP, 7"	(W) HMA for Widening 165 #/Sys HMA Surface, Type "C", on 275 #/Sys HMA Intermediate, Type "C", on 1045 #/Sys HMA Base, Type "C", Placed w/ Minimum Of 3 Lifts, on Subgrade Treatment, Type IB	(15) Curb & Gutter, Type II	(22) Concrete Center Curb, Type D
(C3) PCCP for Approaches, 9" on Subgrade Treatment, Type II		(F1) Multi-Use Path 110 #/Sys HMA Surface, Type "A" on 330 #/Sys HMA Intermediate, Type "A" on 5" Compacted Aggregate, No. 53, Base		(R) Milling, Asphalt, 1 1/2"		(16) Curb & Gutter, Type III	(26) Nursery Sodding
				(M) 165 #/Sys HMA Surface, Type "C"		(17) Roll Curb	(CR) Curb Ramp, Concrete
						(18) Integral Barrier Curb	

See Plat No. 1 sheets for Right Of Way information. Line "PR-A" to be constructed. All proposed construction station/offsets are described from Line "PR-A" unless otherwise noted.



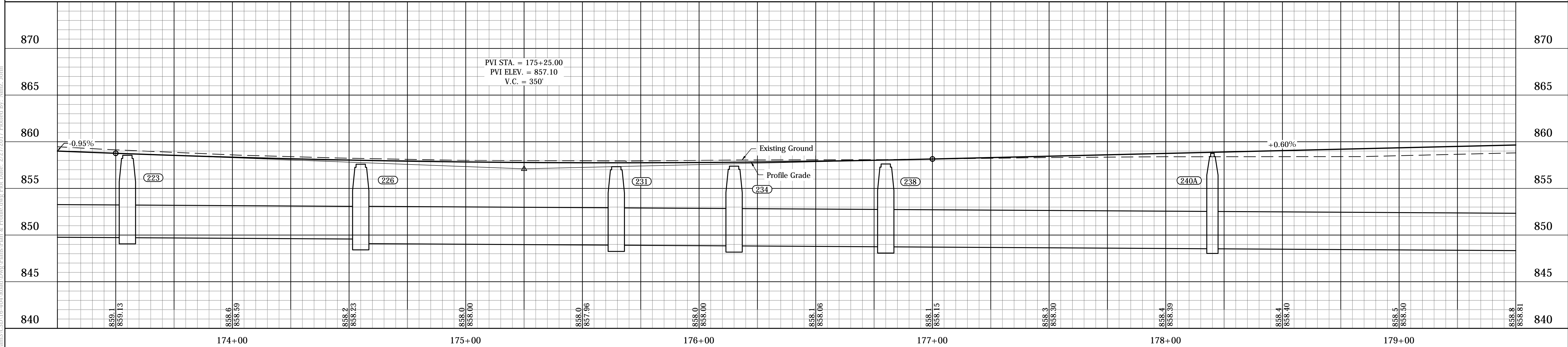
<p>1 Revised Plan & Profile</p> <p>3 Revised Plan & Profile</p>	<p>This information was gathered for input into the Hamilton County Geographic Information System (GIS). This document is considered an official record of the GIS.</p> <p>Entry Date: 2019</p> <p>Entered By: SLM</p>	<p>UNITED Consulting</p>	<p>1625 N. Post Road Indianapolis, IN 46219 Phone 317-895-2585 Fax 317-895-2596 www.ucindy.com</p>		<p>RECOMMENDED FOR APPROVAL: <i>W.R.C.</i> 2/17/17</p> <p>DESIGN ENGINEER: WRC DATE: 2/17/17</p>	<p>CITY OF CARMEL SPRING MILL ROAD FROM 111TH TO MAIN</p> <p>PLAN & PROFILE LINE "PR-A"</p>	<table border="1" style="width: 100%; border-collapse: collapse;"> <tr> <td>HORIZONTAL SCALE</td> <td>BRIDGE FILE</td> </tr> <tr> <td>1" = 20'</td> <td>-</td> </tr> <tr> <td>VERTICAL SCALE</td> <td>DESIGNATION</td> </tr> <tr> <td>1" = 5'</td> <td>-</td> </tr> <tr> <td>SURVEY BOOK</td> <td>SHEETS</td> </tr> <tr> <td>-</td> <td>37 of 200</td> </tr> <tr> <td>CONTRACT</td> <td>PROJECT</td> </tr> <tr> <td>-</td> <td>16-ENG-52</td> </tr> </table>	HORIZONTAL SCALE	BRIDGE FILE	1" = 20'	-	VERTICAL SCALE	DESIGNATION	1" = 5'	-	SURVEY BOOK	SHEETS	-	37 of 200	CONTRACT	PROJECT	-	16-ENG-52
HORIZONTAL SCALE	BRIDGE FILE																						
1" = 20'	-																						
VERTICAL SCALE	DESIGNATION																						
1" = 5'	-																						
SURVEY BOOK	SHEETS																						
-	37 of 200																						
CONTRACT	PROJECT																						
-	16-ENG-52																						



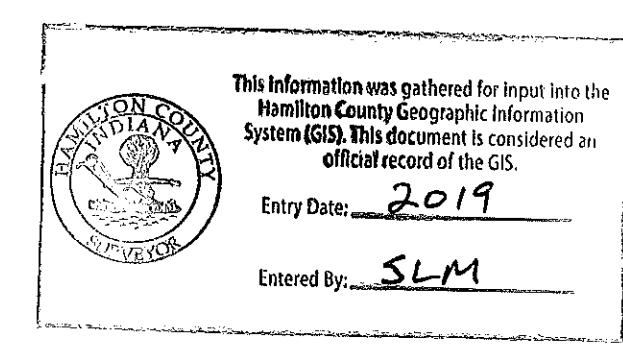
LEGEND

- (C) PCCP for Approaches, 6" on Subgrade Treatment, Type II
- (D) HMA for Approaches 165 #/Sys HMA Surface, Type "C", on 275 #/Sys HMA Intermediate, Type "C", on 1045 #/Sys HMA Base, Type "C", Placed w/ Minimum Of 3 Lifts, on Subgrade Treatment, Type IB
- (F) Sidewalk, 4" on 4" Compacted Aggregate, No. 53, Base
- (FI) Multi-Use Path 110 #/Sys HMA Surface, Type "A" on 330 #/Sys HMA Intermediate, Type "A" on 5" Compacted Aggregate, No. 53, Base
- (K) 165 #/Sys HMA Surface, Type "C" on 275 #/Sys HMA Intermediate, Type "C" on 385 #/Sys HMA Base, Type "C" on 250 #/Sys HMA Intermediate, OG, Type "C" on 330 #/Sys HMA Base, Type "C"
- (KI) Truck Apron Decorative PCCP, 7"
- (R) Milling, Asphalt, 1 1/2"
- (M) 165 #/Sys HMA Surface, Type "C"
- (W) HMA for Widening 165 #/Sys HMA Surface, Type "C", on 275 #/Sys HMA Intermediate, Type "C", on 1045 #/Sys HMA Base, Type "C", Placed w/ Minimum Of 3 Lifts, on Subgrade Treatment, Type IB
- (15) Curb & Gutter, Type II
- (16) Curb & Gutter, Type III
- (17) Roll Curb
- (18) Integral Barrier Curb
- (22) Concrete Center Curb, Type D
- (26) Nursery Sodding
- (CR) Curb Ramp, Concrete

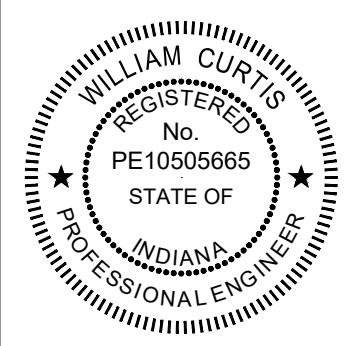
See Plat No. 1 sheets for Right Of Way information. Line "PR-A" to be constructed. All proposed construction station/offsets are described from Line "PR-A" unless otherwise noted.



- 1 Revised Plan & Profile
- 3 Revised Plan & Profile



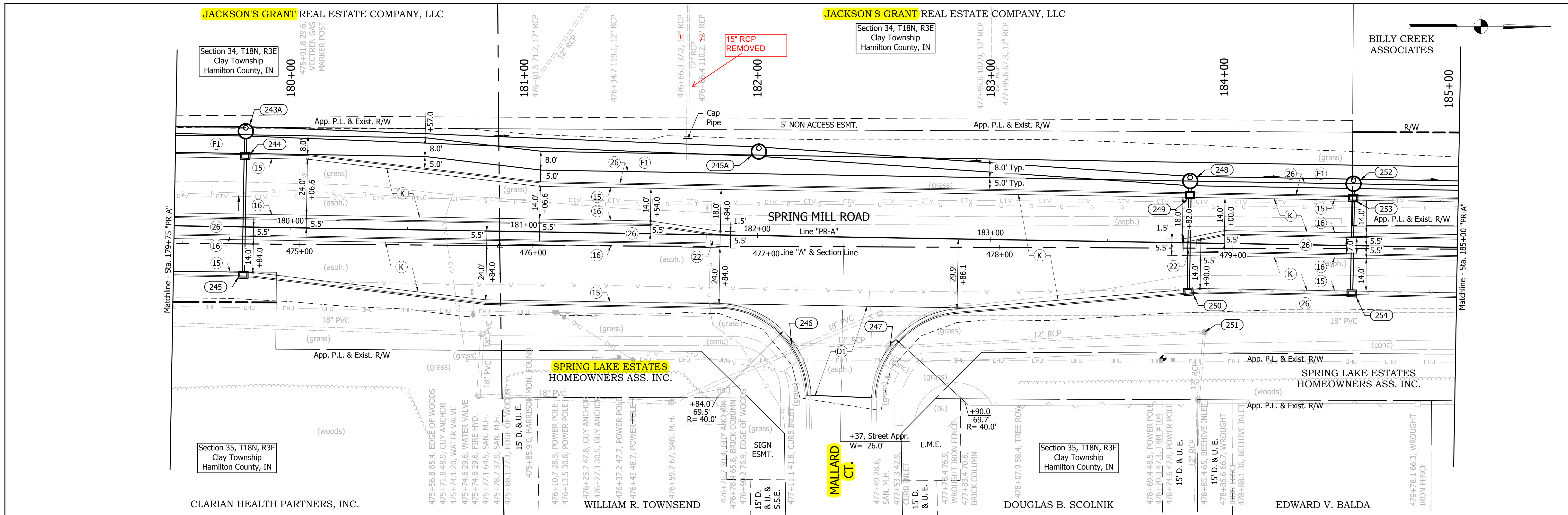
1625 N. Post Road
Indianapolis, IN 46219
Phone 317-895-2585
Fax 317-895-2596
www.ucindy.com



RECOMMENDED FOR APPROVAL: *WRC* 2/17/17
DESIGN ENGINEER DATE
DESIGNED: HEK DRAWN: JNII
CHECKED: WRC CHECKED: WRC

CITY OF CARMEL
SPRING MILL ROAD FROM 111TH TO MAIN
PLAN & PROFILE
LINE "PR-A"

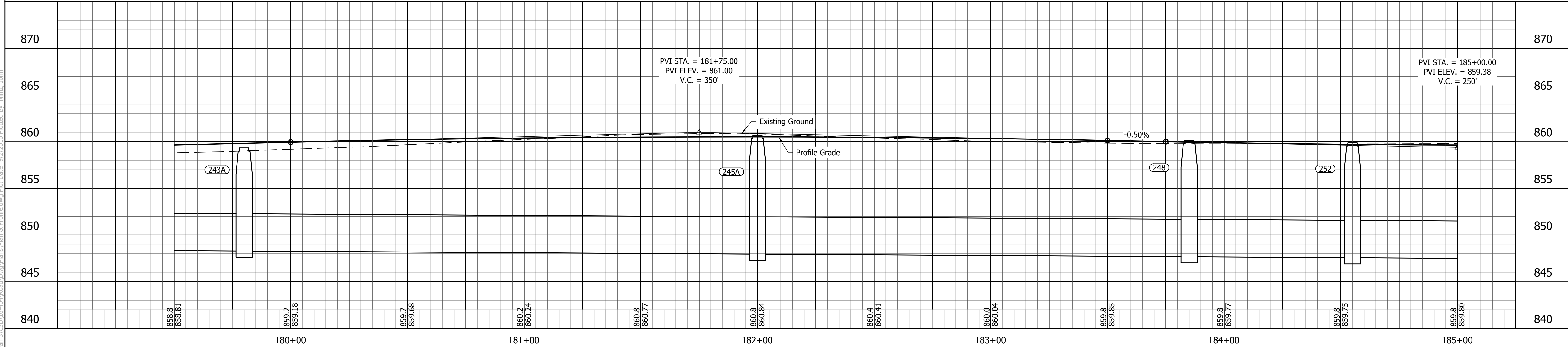
HORIZONTAL SCALE	BRIDGE FILE
1" = 20'	-
VERTICAL SCALE	DESIGNATION
1" = 5"	-
SURVEY BOOK	SHEETS
-	44 of 200
CONTRACT	PROJECT
-	16-ENG-52



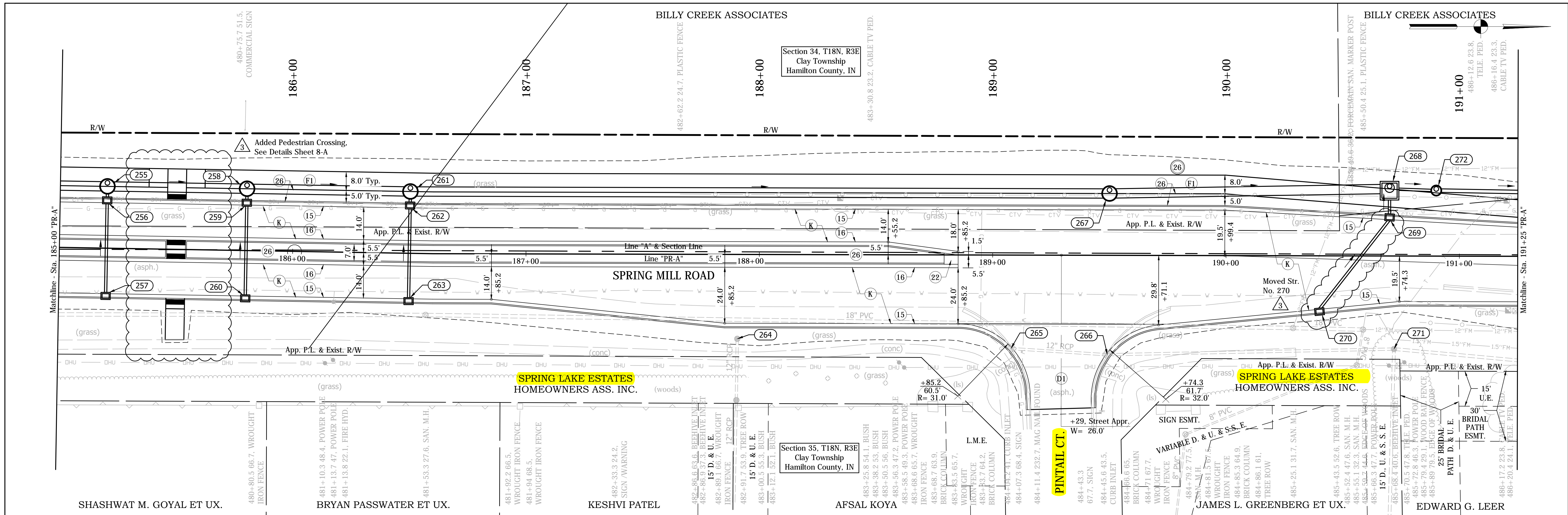
LEGEND

(C1) PCCP for Approaches, 6" on Subgrade Treatment, Type II	(D1) HMA for Approaches 165 #/Sys HMA Surface, Type "C", on 275 #/Sys HMA Intermediate, Type "C", on 1045 #/Sys HMA Base, Type "C", Placed w/ Minimum Of 3 Lifts, on Subgrade Treatment, Type IB	(F) Sidewalk, 4" on 4" Compacted Aggregate, No. 53, Base	(K) 165 #/Sys HMA Surface, Type "C" on 275 #/Sys HMA Intermediate, Type "C" on 385 #/Sys HMA Base, Type "C" on 250 #/Sys HMA Intermediate, OG, Type "C" on 330 #/Sys HMA Base, Type "C"	(K1) Truck Apron Decorative PCCP, 7"	(W) HMA for Widening 165 #/Sys HMA Surface, Type "C", on 275 #/Sys HMA Intermediate, Type "C", on 1045 #/Sys HMA Base, Type "C", Placed w/ Minimum Of 3 Lifts, on Subgrade Treatment, Type IB	(15) Curb & Gutter, Type II	(22) Concrete Center Curb, Type D
(C3) PCCP for Approaches, 9" on Subgrade Treatment, Type II		(F1) Multi-Use Path 110 #/Sys HMA Surface, Type "A" on 330 #/Sys HMA Intermediate, Type "A" on 5" Compacted Aggregate, No. 53, Base		(R) Milling, Asphalt, 1 1/2"		(16) Curb & Gutter, Type III	(26) Nursery Sodding
				(M) 165 #/Sys HMA Surface, Type "C"		(17) Roll Curb	(CR) Curb Ramp, Concrete

See Plat No. 1 sheets for Right Of Way information. Line "PR-A" to be constructed. All proposed construction station/offsets are described from Line "PR-A" unless otherwise noted.



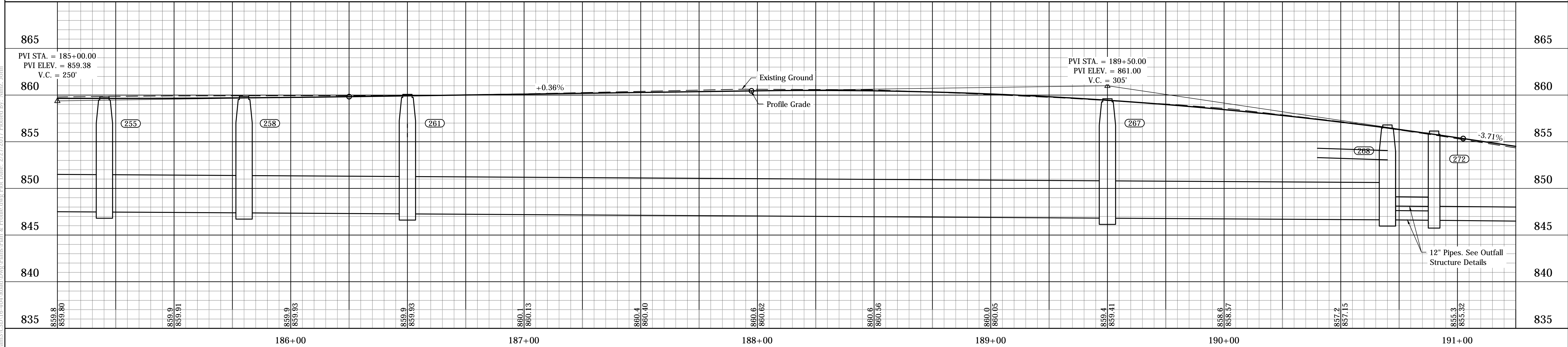
<p>Revised Plan & Profile</p>	<p>1625 N. Post Road Indianapolis, IN 46219 Phone 317-895-2585 Fax 317-895-2596 www.ucindy.com</p> <p style="text-align: center;">UNITED Consulting</p>	<p>RECOMMENDED FOR APPROVAL: <i>W.R.C.</i> 9-2-16 DESIGN ENGINEER DATE</p> <p>DESIGNED: HEK DRAWN: JNII CHECKED: WRC CHECKED: WRC</p>	<p>CITY OF CARMEL SPRING MILL ROAD FROM 111TH TO MAIN</p> <p>PLAN & PROFILE LINE "PR-A"</p>	<table border="1" style="width: 100%; border-collapse: collapse;"> <tr> <td>HORIZONTAL SCALE 1" = 20'</td> <td>BRIDGE FILE -</td> </tr> <tr> <td>VERTICAL SCALE 1" = 5'</td> <td>DESIGNATION -</td> </tr> <tr> <td>SURVEY BOOK -</td> <td>SHEETS 45 of 200</td> </tr> <tr> <td>CONTRACT -</td> <td>PROJECT 16-ENG-52</td> </tr> </table>	HORIZONTAL SCALE 1" = 20'	BRIDGE FILE -	VERTICAL SCALE 1" = 5'	DESIGNATION -	SURVEY BOOK -	SHEETS 45 of 200	CONTRACT -	PROJECT 16-ENG-52
HORIZONTAL SCALE 1" = 20'	BRIDGE FILE -											
VERTICAL SCALE 1" = 5'	DESIGNATION -											
SURVEY BOOK -	SHEETS 45 of 200											
CONTRACT -	PROJECT 16-ENG-52											



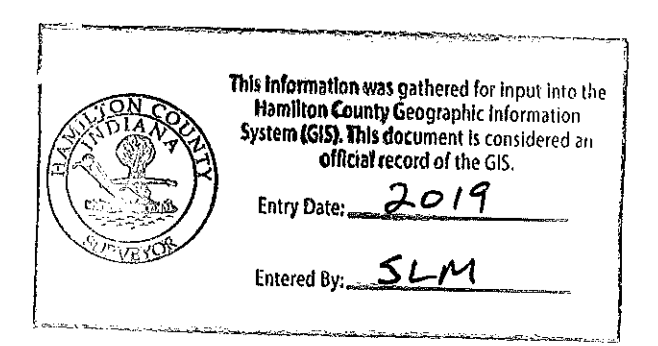
LEGEND

- (C) PCCP for Approaches, 6" on Subgrade Treatment, Type II
- (D1) HMA for Approaches 165 #/Sys HMA Surface, Type "C", on 275 #/Sys HMA Intermediate, Type "C", on 1045 #/Sys HMA Base, Type "C", Placed w/ Minimum Of 3 Lifts, on Subgrade Treatment, Type IB
- (F) Sidewalk, 4" on 4" Compacted Aggregate, No. 53, Base
- (FI) Multi-Use Path 110 #/Sys HMA Surface, Type "A" on 330 #/Sys HMA Intermediate, Type "A" on 5" Compacted Aggregate, No. 53, Base
- (K) 165 #/Sys HMA Surface, Type "C" on 275 #/Sys HMA Intermediate, Type "C" on 385 #/Sys HMA Base, Type "C" on 250 #/Sys HMA Intermediate, OG, Type "C" on 330 #/Sys HMA Base, Type "C"
- (K1) Truck Apron Decorative PCCP, 7"
- (R) Milling, Asphalt, 1 1/2"
- (M) 165 #/Sys HMA Surface, Type "C"
- (W) HMA for Widening 165 #/Sys HMA Surface, Type "C", on 275 #/Sys HMA Intermediate, Type "C", on 1045 #/Sys HMA Base, Type "C", Placed w/ Minimum Of 3 Lifts, on Subgrade Treatment, Type IB
- (15) Curb & Gutter, Type II
- (16) Curb & Gutter, Type III
- (17) Roll Curb
- (18) Integral Barrier Curb
- (22) Concrete Center Curb, Type D
- (26) Nursery Sodding
- (CR) Curb Ramp, Concrete

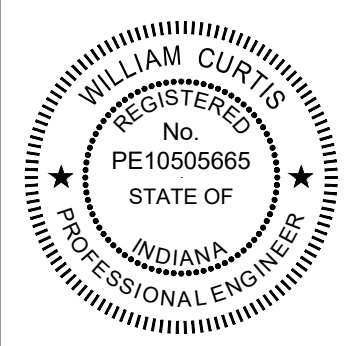
See Plat No. 1 sheets for Right Of Way information. Line "PR-A" to be constructed. All proposed construction station/offsets are described from Line "PR-A" unless otherwise noted.



- 1 Revised Plan & Profile
- 3 Revised Plan & Profile



1625 N. Post Road
Indianapolis, IN 46219
Phone 317-895-2585
Fax 317-895-2596
www.ucindy.com



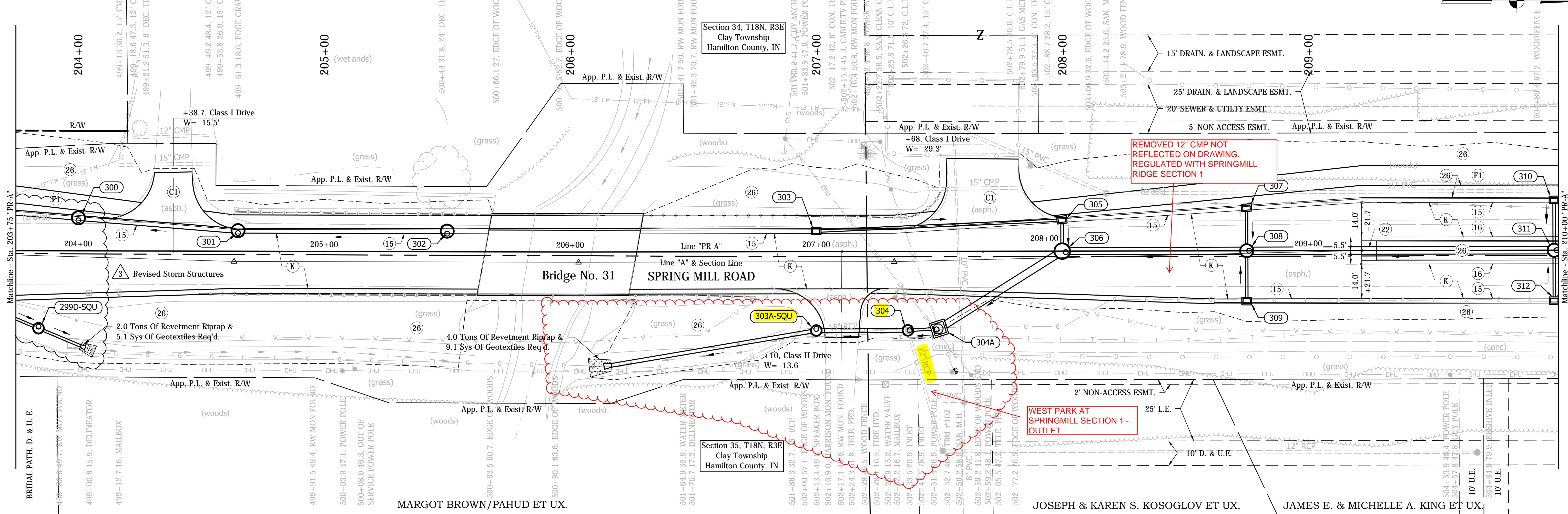
RECOMMENDED FOR APPROVAL: *William Curis* 2/17/17
DESIGN ENGINEER DATE

DESIGNED: HEK DRAWN: JNII
CHECKED: WRC CHECKED: WRC

CITY OF CARMEL
SPRING MILL ROAD FROM 111TH TO MAIN

PLAN & PROFILE
LINE "PR-A"

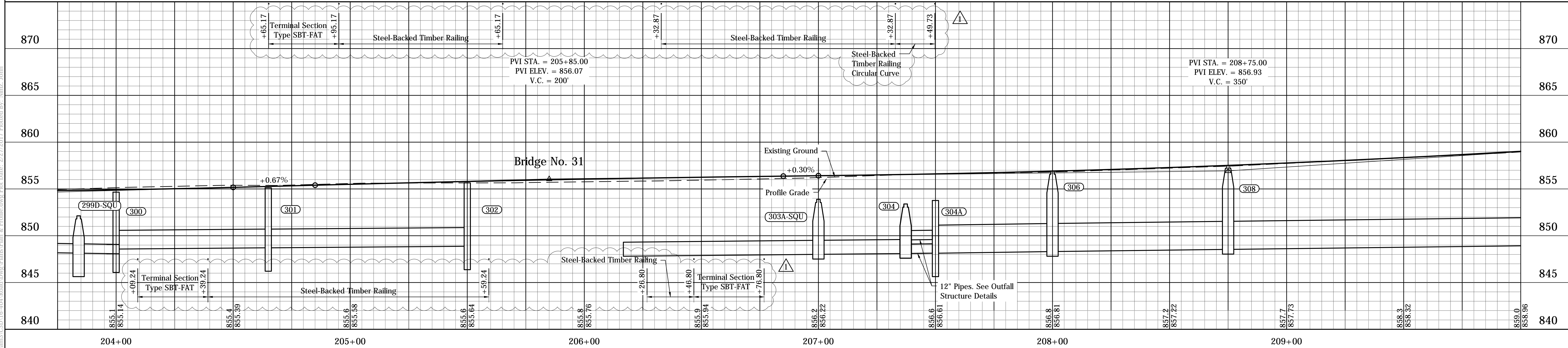
HORIZONTAL SCALE 1" = 20'	BRIDGE FILE -
VERTICAL SCALE 1" = 5'	DESIGNATION -
SURVEY BOOK -	SHEETS 46 of 200
CONTRACT -	PROJECT 16-ENG-52



LEGEND

- (C1) PCCP for Approaches, 6" on Subgrade Treatment, Type II
- (C3) PCCP for Approaches, 9" on Subgrade Treatment, Type II
- (D1) HMA for Approaches 165 #/Sys HMA Surface, Type "C", on 275 #/Sys HMA Intermediate, Type "C", on 1045 #/Sys HMA Base, Type "C", Placed w/ Minimum Of 3 Lifts, on Subgrade Treatment, Type IB
- (F) Sidewalk, 4" on 4" Compacted Aggregate, No. 53, Base
- (F1) Multi-Use Path 110 #/Sys HMA Surface, Type "A" on 330 #/Sys HMA Intermediate, Type "A" on 5" Compacted Aggregate, No. 53, Base
- (K) 165 #/Sys HMA Surface, Type "C" on 275 #/Sys HMA Intermediate, Type "C" on 385 #/Sys HMA Base, Type "C" on 250 #/Sys HMA Intermediate, OG, Type "C" on 330 #/Sys HMA Base, Type "C"
- (K1) Truck Apron Decorative PCCP, 7"
- (R) Milling, Asphalt, 1 1/2"
- (M) 165 #/Sys HMA Surface, Type "C"
- (W) HMA for Widening 165 #/Sys HMA Surface, Type "C", on 275 #/Sys HMA Intermediate, Type "C", on 1045 #/Sys HMA Base, Type "C", Placed w/ Minimum Of 3 Lifts, on Subgrade Treatment, Type IB
- (15) Curb & Gutter, Type II
- (16) Curb & Gutter, Type III
- (17) Roll Curb
- (18) Integral Barrier Curb
- (22) Concrete Center Curb, Type D
- (26) Nursery Sodding
- (CR) Curb Ramp, Concrete

See Plat No. 1 sheets for Right Of Way information. Line "PR-A" to be constructed. All proposed construction station/offsets are described from Line "PR-A" unless otherwise noted.



- 1 Revised Plan & Profile
- 3 Revised Plan & Profile

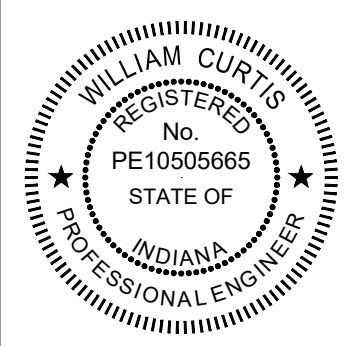
This information was gathered for input into the Hamilton County Geographic Information System (GIS). This document is considered an official record of the GIS.

Entry Date: 2019

Entered By: SLM



1625 N. Post Road
Indianapolis, IN 46219
Phone 317-895-2585
Fax 317-895-2596
www.ucindy.com

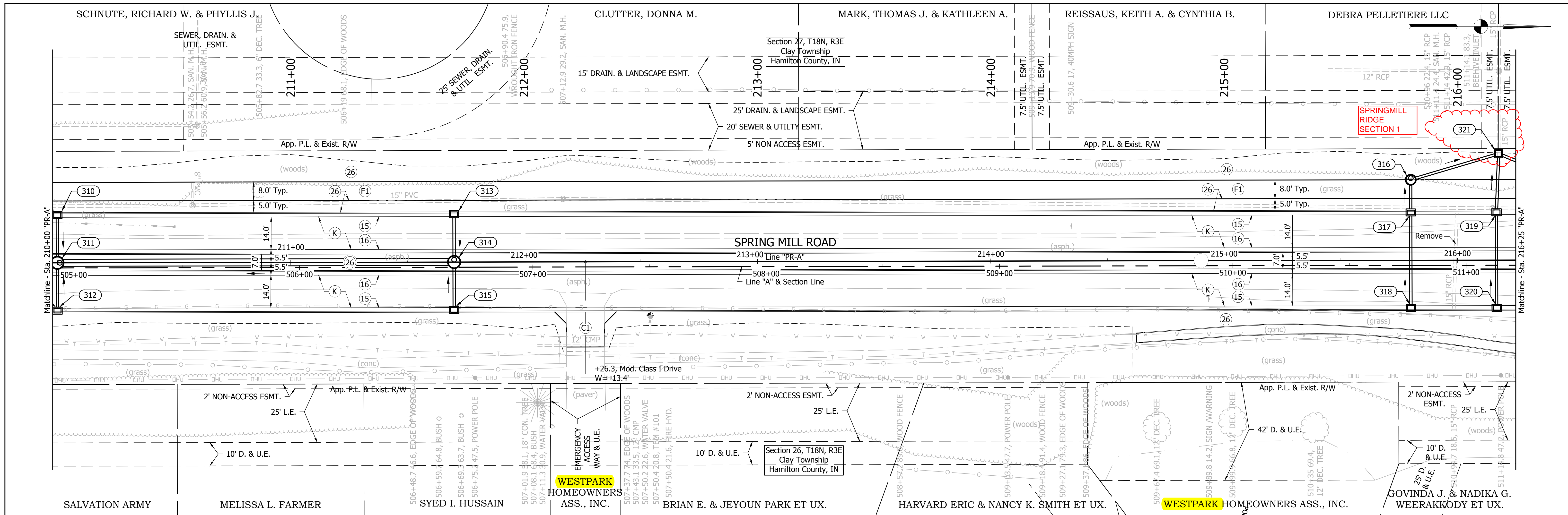


RECOMMENDED FOR APPROVAL	<i>W.R.C.</i>	DATE	2/17/17
DESIGNED	HEK	DRAWN	JNII
CHECKED	WRC	CHECKED	WRC

CITY OF CARMEL
SPRING MILL ROAD FROM 111TH TO MAIN

PLAN & PROFILE
LINE "PR-A"

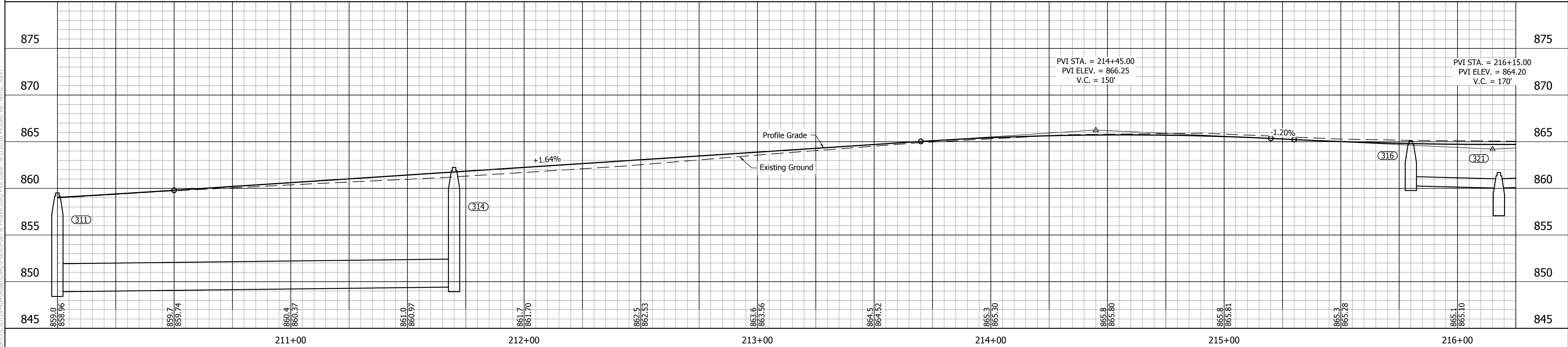
HORIZONTAL SCALE	1" = 20'	BRIDGE FILE	-
VERTICAL SCALE	1" = 5"	DESIGNATION	-
SURVEY BOOK	-	SHEETS	49 of 200
CONTRACT	-	PROJECT	16-ENG-52



LEGEND

- (C1) PCCP for Approaches, 6" on Subgrade Treatment, Type II
- (C3) PCCP for Approaches, 9" on Subgrade Treatment, Type II
- (D1) HMA for Approaches 165 #/Sys HMA Surface, Type "C", on 275 #/Sys HMA Intermediate, Type "C", on 1045 #/Sys HMA Base, Type "C", Placed w/ Minimum Of 3 Lifts, on Subgrade Treatment, Type IB
- (F) Sidewalk, 4" on 4" Compacted Aggregate, No. 53, Base
- (F1) Multi-Use Path 110 #/Sys HMA Surface, Type "A" on 330 #/Sys HMA Intermediate, Type "A" on 5" Compacted Aggregate, No. 53, Base
- (K) 165 #/Sys HMA Surface, Type "C" on 275 #/Sys HMA Intermediate, Type "C" on 385 #/Sys HMA Base, Type "C" on 250 #/Sys HMA Intermediate, OG, Type "C" on 330 #/Sys HMA Base, Type "C"
- (K1) Truck Apron Decorative PCCP, 7"
- (R) Milling, Asphalt, 1 1/2"
- (M) 165 #/Sys HMA Surface, Type "C"
- (W) HMA for Widening 165 #/Sys HMA Surface, Type "C", on 275 #/Sys HMA Intermediate, Type "C", on 1045 #/Sys HMA Base, Type "C", Placed w/ Minimum Of 3 Lifts, on Subgrade Treatment, Type IB
- (15) Curb & Gutter, Type II
- (16) Curb & Gutter, Type III
- (17) Roll Curb
- (18) Integral Barrier Curb
- (22) Concrete Center Curb, Type D
- (26) Nursery Sodding
- (CR) Curb Ramp, Concrete

See Plat No. 1 sheets for Right Of Way information. Line "PR-A" to be constructed. All proposed construction station/offsets are described from Line "PR-A" unless otherwise noted.



<p>1 Revised Plan & Profile</p>	<p>1625 N. Post Road Indianapolis, IN 46219 Phone 317-895-2585 Fax 317-895-2596 www.ucindy.com</p>	<p>RECOMMENDED FOR APPROVAL: <i>W.R.C.</i> 9-2-16 DESIGN ENGINEER DATE</p> <p>DESIGNED: HEK DRAWN: JNII CHECKED: WRC CHECKED: WRC</p>	<p>CITY OF CARMEL SPRING MILL ROAD FROM 111TH TO MAIN</p> <p>PLAN & PROFILE LINE "PR-A"</p>	<table border="1" style="width: 100%; border-collapse: collapse;"> <tr> <td>HORIZONTAL SCALE 1" = 20'</td> <td>BRIDGE FILE -</td> </tr> <tr> <td>VERTICAL SCALE 1" = 5'</td> <td>DESIGNATION -</td> </tr> <tr> <td>SURVEY BOOK -</td> <td>SHEETS 50 of 200</td> </tr> <tr> <td>CONTRACT -</td> <td>PROJECT 16-ENG-52</td> </tr> </table>	HORIZONTAL SCALE 1" = 20'	BRIDGE FILE -	VERTICAL SCALE 1" = 5'	DESIGNATION -	SURVEY BOOK -	SHEETS 50 of 200	CONTRACT -	PROJECT 16-ENG-52
HORIZONTAL SCALE 1" = 20'	BRIDGE FILE -											
VERTICAL SCALE 1" = 5'	DESIGNATION -											
SURVEY BOOK -	SHEETS 50 of 200											
CONTRACT -	PROJECT 16-ENG-52											